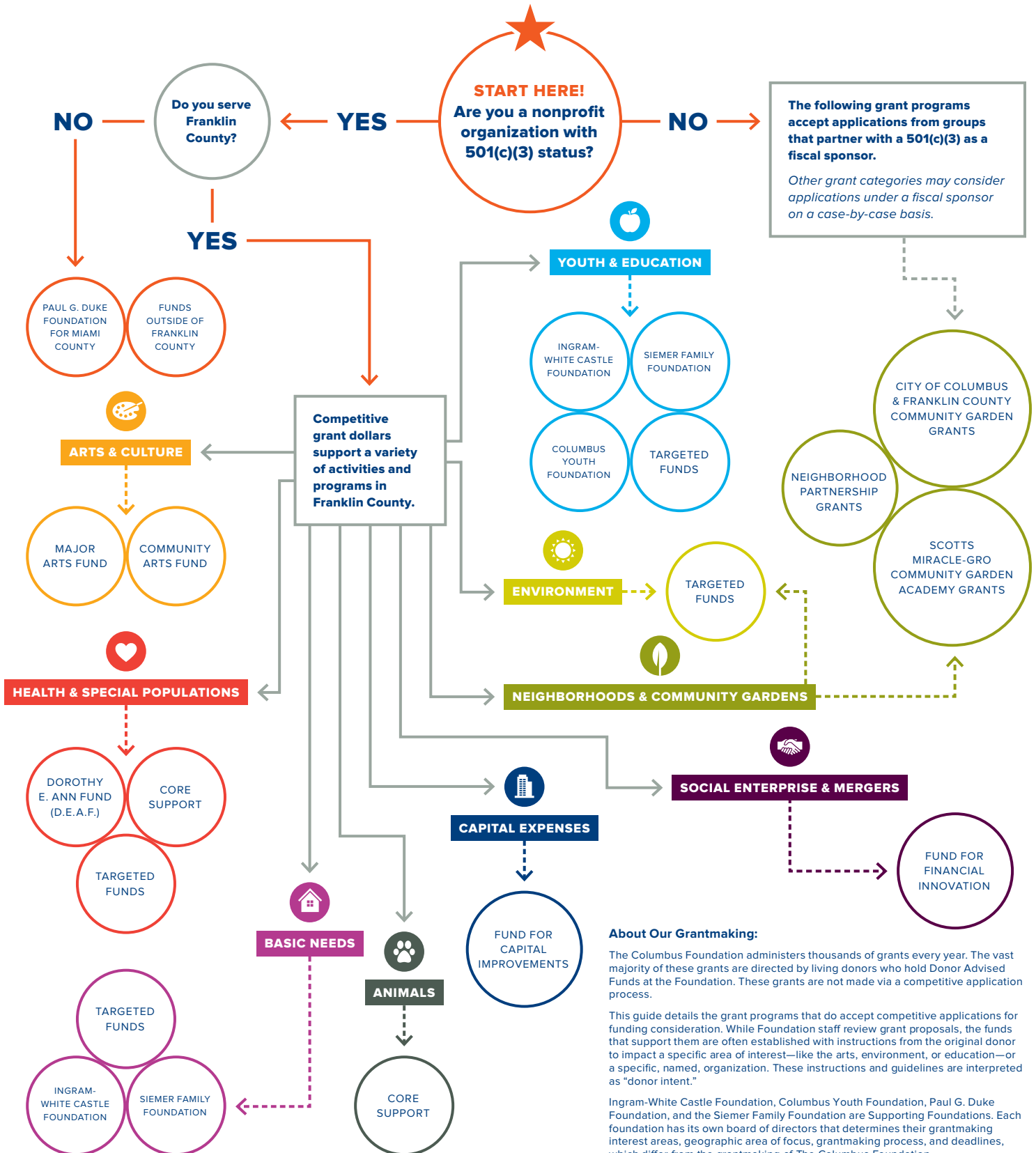


The Columbus Foundation and Supporting Foundations Grant Guide



THE COLUMBUS FOUNDATION

Use this guide to identify grantmaking areas that may be a potential fit for your organization. Then, visit our [Grant Opportunities](#) page to learn more!



About Our Grantmaking:

The Columbus Foundation administers thousands of grants every year. The vast majority of these grants are directed by living donors who hold Donor Advised Funds at the Foundation. These grants are not made via a competitive application process.

This guide details the grant programs that do accept competitive applications for funding consideration. While Foundation staff review grant proposals, the funds that support them are often established with instructions from the original donor to impact a specific area of interest—like the arts, environment, or education—or a specific, named, organization. These instructions and guidelines are interpreted as “donor intent.”

Ingram-White Castle Foundation, Columbus Youth Foundation, Paul G. Duke Foundation, and the Siemer Family Foundation are Supporting Foundations. Each foundation has its own board of directors that determines their grantmaking interest areas, geographic area of focus, grantmaking process, and deadlines, which differ from the grantmaking of The Columbus Foundation.

Please note, The Columbus Foundation does not connect nonprofits directly with individual donors.

How are grants distributed at The Columbus Foundation?



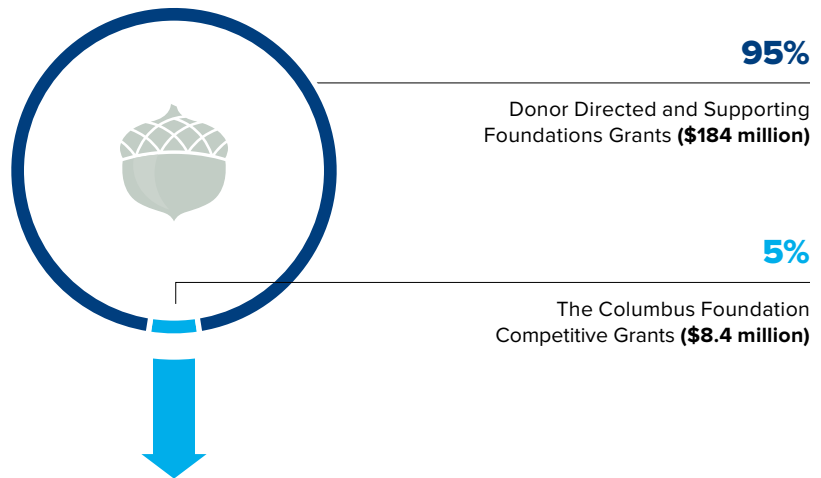
THE COLUMBUS
FOUNDATION

The following percentages reflect average grantmaking over the last five years (2014-2018).

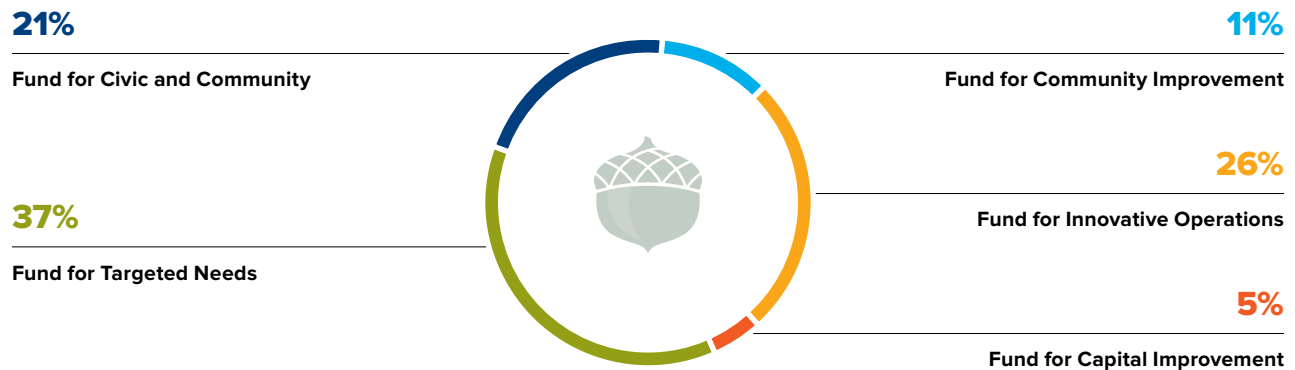
The Columbus Foundation grants described here are determined through the competitive application process.

Donor Directed (Donor Advised Fund) and Supporting Foundations grants represent the balance of grants made each year.

Average Annual Grantmaking



The Columbus Foundation Competitive Grants



Fund for Community Improvement

Funded organizations benefit from a close working relationship with Community Research and Grants Management staff. The fund supports neighborhood revitalization, as well as programs and systems that connect youth to transformative opportunities.

Fund for Capital Improvements

Supports capital campaigns and projects designed to improve the delivery, quality, and efficiency of nonprofit programs and services that serve vulnerable populations

Fund for Innovative Operations

Supports transformative and pioneering ideas in the following categories: Fund for Financial innovation (partnerships, acquisitions, mergers, and social enterprise); Arts & Culture (Community Arts and Major Arts); and the non-competitive category of Continuous Improvement, which focuses on strengthening, bringing to scale, and building the capacity of select nonprofit organizations.

Fund for Targeted Needs

Supports a wide variety of donor interests, including health, animal welfare, community improvement, conservation, youth development, substance abuse, special populations, and more.

Fund for Civic and Community

This non-competitive grant category is positioned to respond to unique community needs and supports initiatives and activities that improve and strengthen our community.



Learn more about these funds in The Columbus Foundation's [Nonprofit Center](#).